

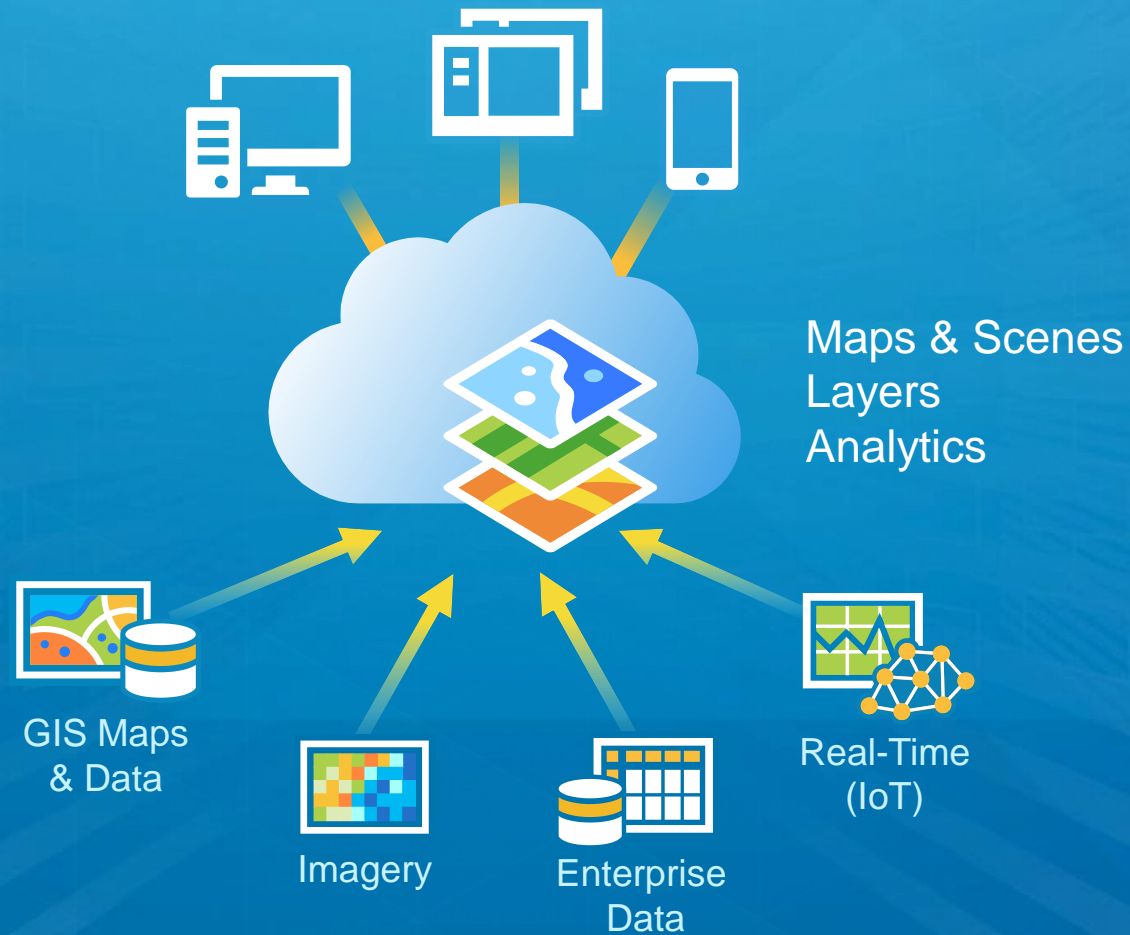
# Technologietrends und Impressionen

# Technologietrends und Impressionen

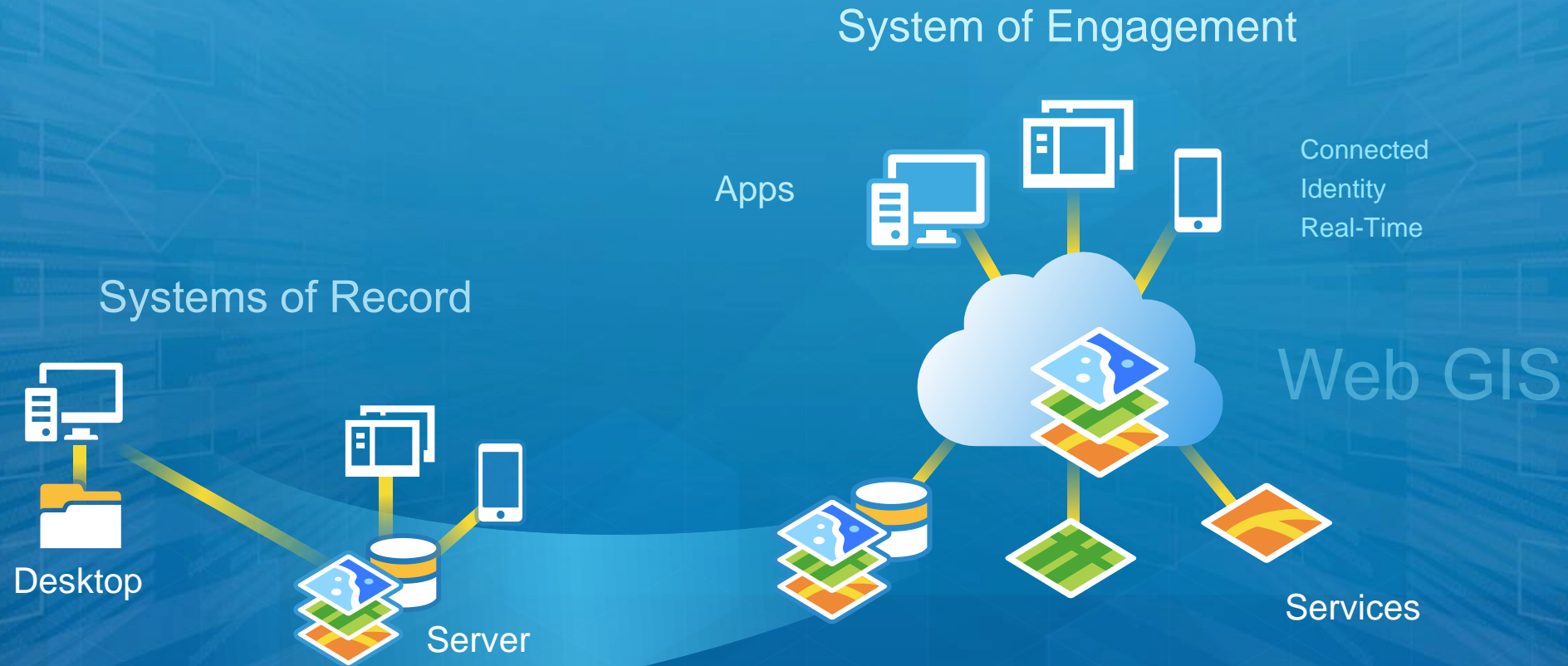
- **ArcGIS Plattform als Ganzes, WebGIS**
- **ArcGIS Pro**
  - Inkl. SDK
- **Vector Tiles**
- **Apps**

# ArcGIS

GeoInformation Model now also Integrates Maps & Scenes, Layers and Analytics



# Organizations are Fully Leveraging Their Information Assets

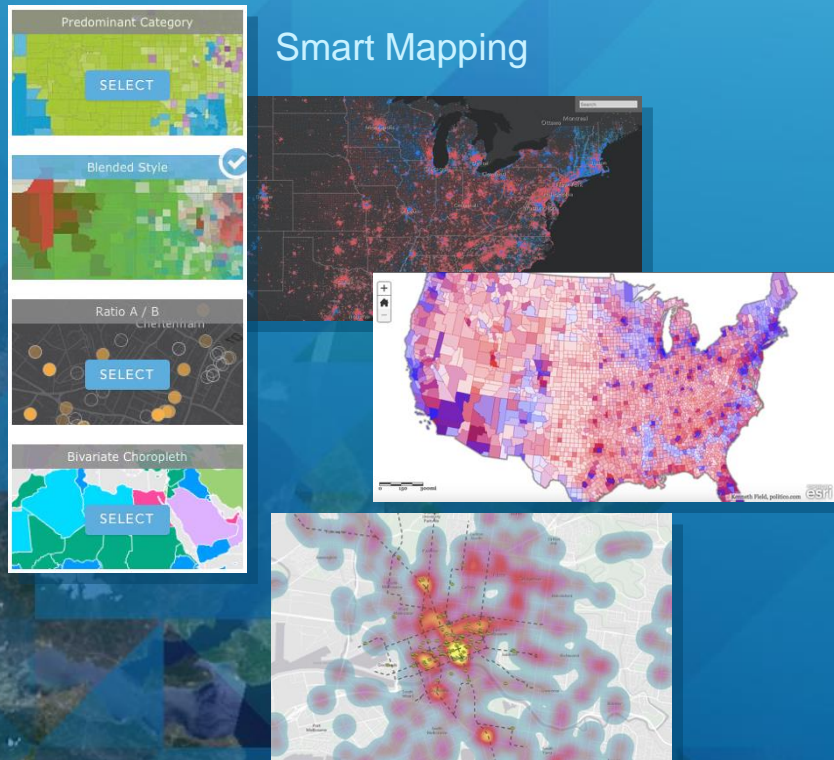


Opening up, Integrating and Simplifying Everything



# Mapping

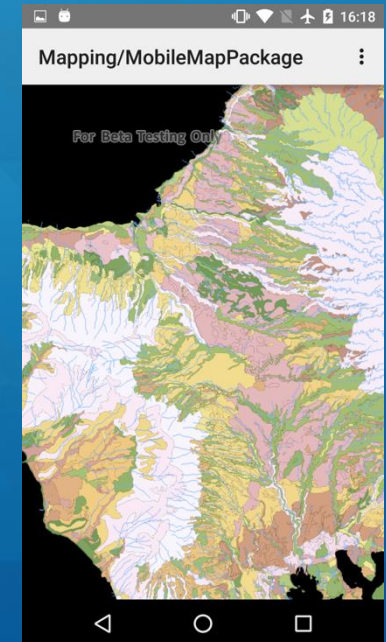
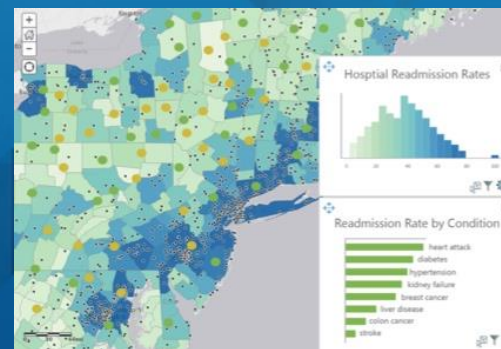
## Smart Mapping



## Vector Tiles



## Data Visualization

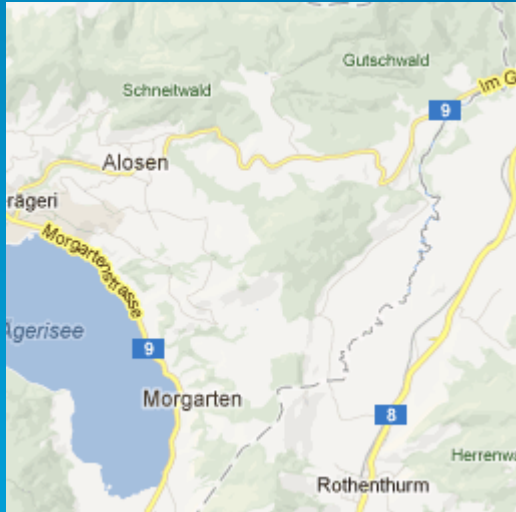


# Vector Tiles

# Why Vector Tiles?

Raster tiles for high dpi devices

128



256



256

*Example from Google Maps*

# Why vector tiles?

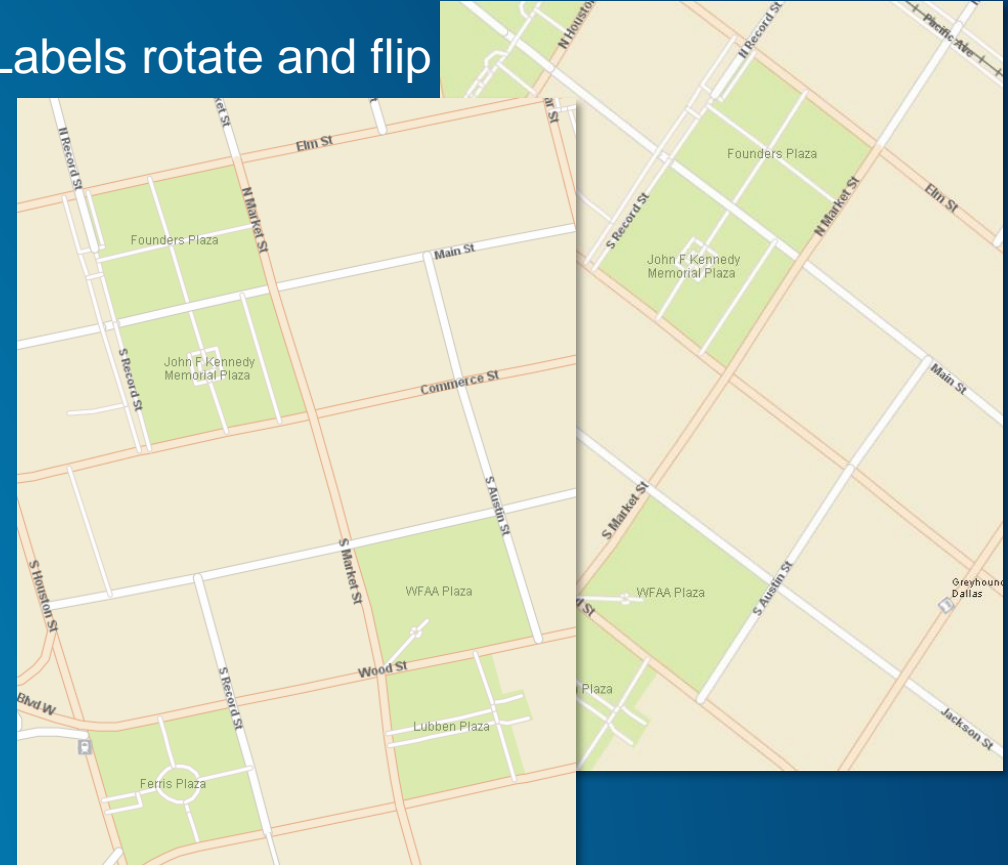
- GPUs have changed the landscape
  - On your devices (OpenGL)
  - In your browser (WebGL)
  - On your desktop (DirectX, OpenGL)
  - Even in virtualized systems (vGPU)
- Vector data can remain vector
- Raster data still best served as raster in most circumstances



# Advantages of vector tiles

- **Display quality**
  - Best possible resolution for Retina displays
  - Small efficient format
- **Dynamic labeling**
  - Clearer, more readable text
  - On the fly labeling for heads up display
- **Map Styling**
  - Streets, Topo, Canvas from one tileset
  - Day and Night mode
  - Restyling

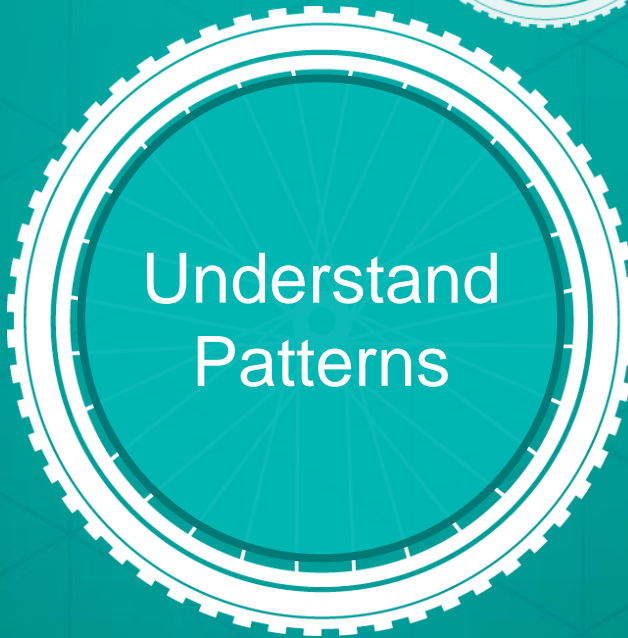
Labels rotate and flip



# Cooking process

- Entire world
  - ~ 8hrs on a desktop machine
  - Tiles ~ 13 GB
  - Multiple styles can use the same tiles
- Compared to raster
  - ~ many weeks on a server cluster per map style
  - Tiles ~ 20 TB

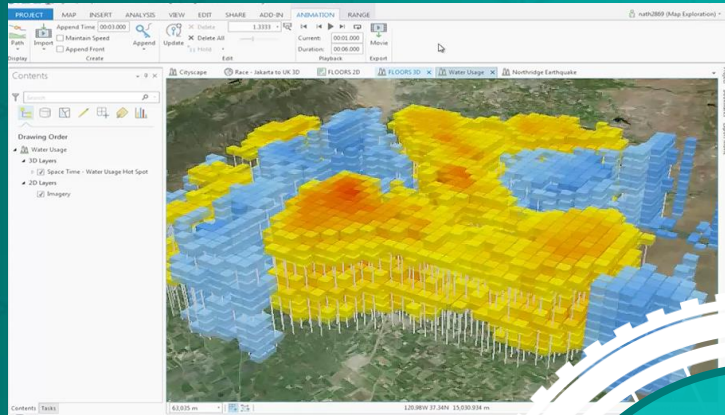
See → Understand → Decide



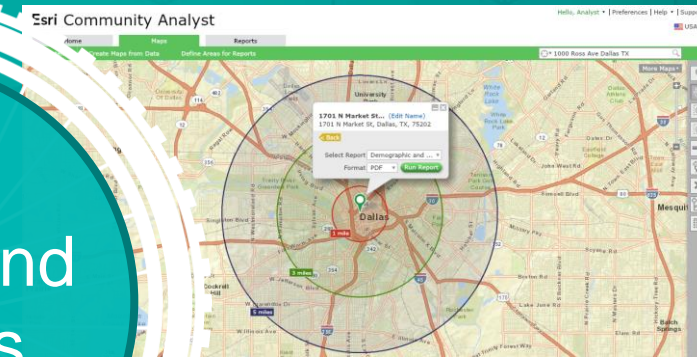
Apps



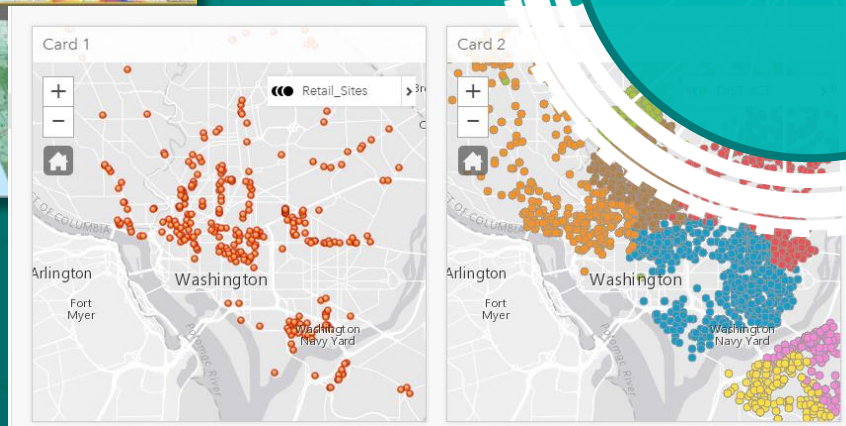
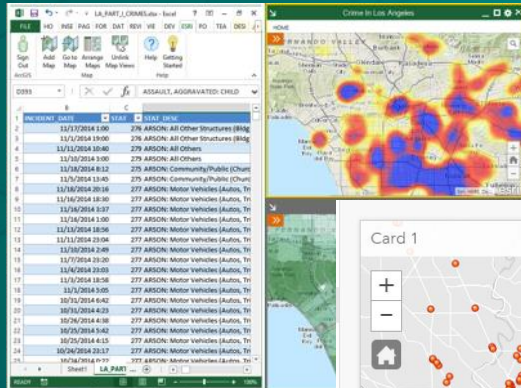
## ArcGIS for Desktop



## Community Analyst



## Maps for Office



## Business Analyst

## Insights



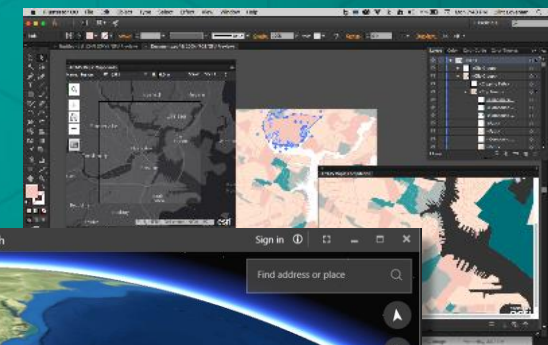
Explorer for ArcGIS



Story Maps



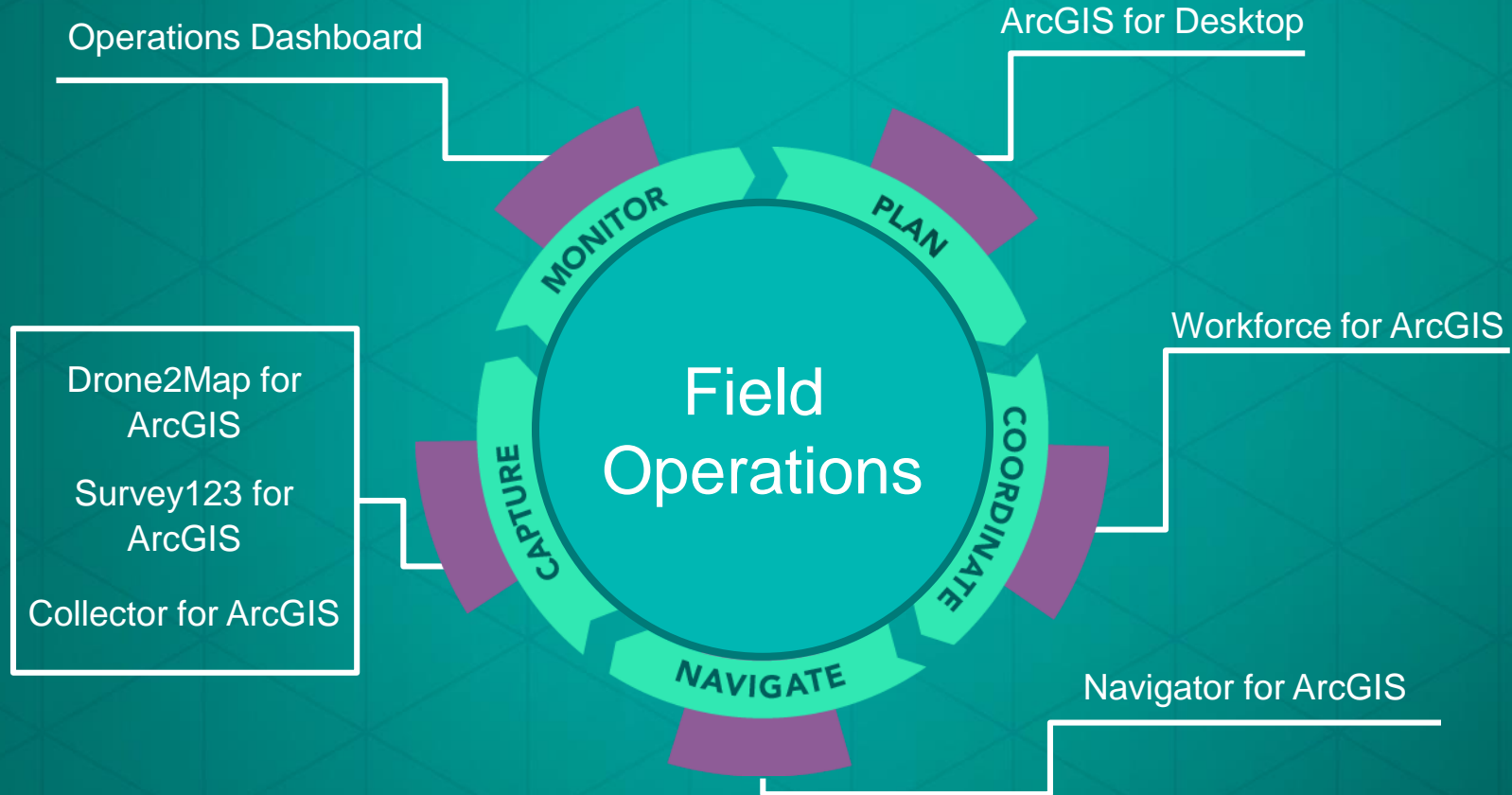
ArcGIS Maps for Adobe Creative Cloud



ArcGIS Earth

# Field Operations

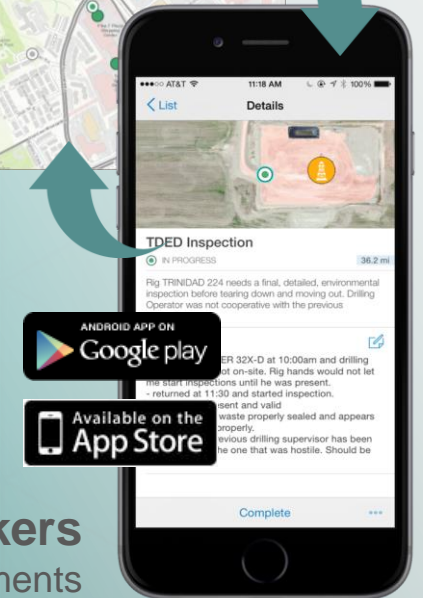
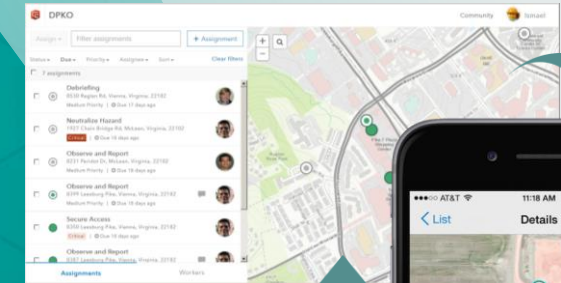






# Workforce for ArcGIS

**Dispatcher**  
Assigns Work



**Field Workers**  
Receive Assignments

**Work as a Team**  
**Now in Beta**



Workforce for ArcGIS



# Survey123 for ArcGIS



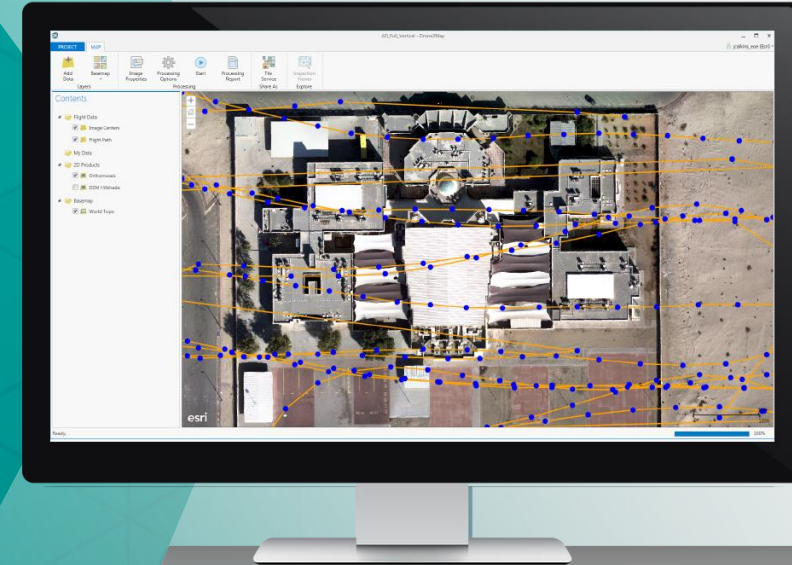
Smart Forms

Now in Beta

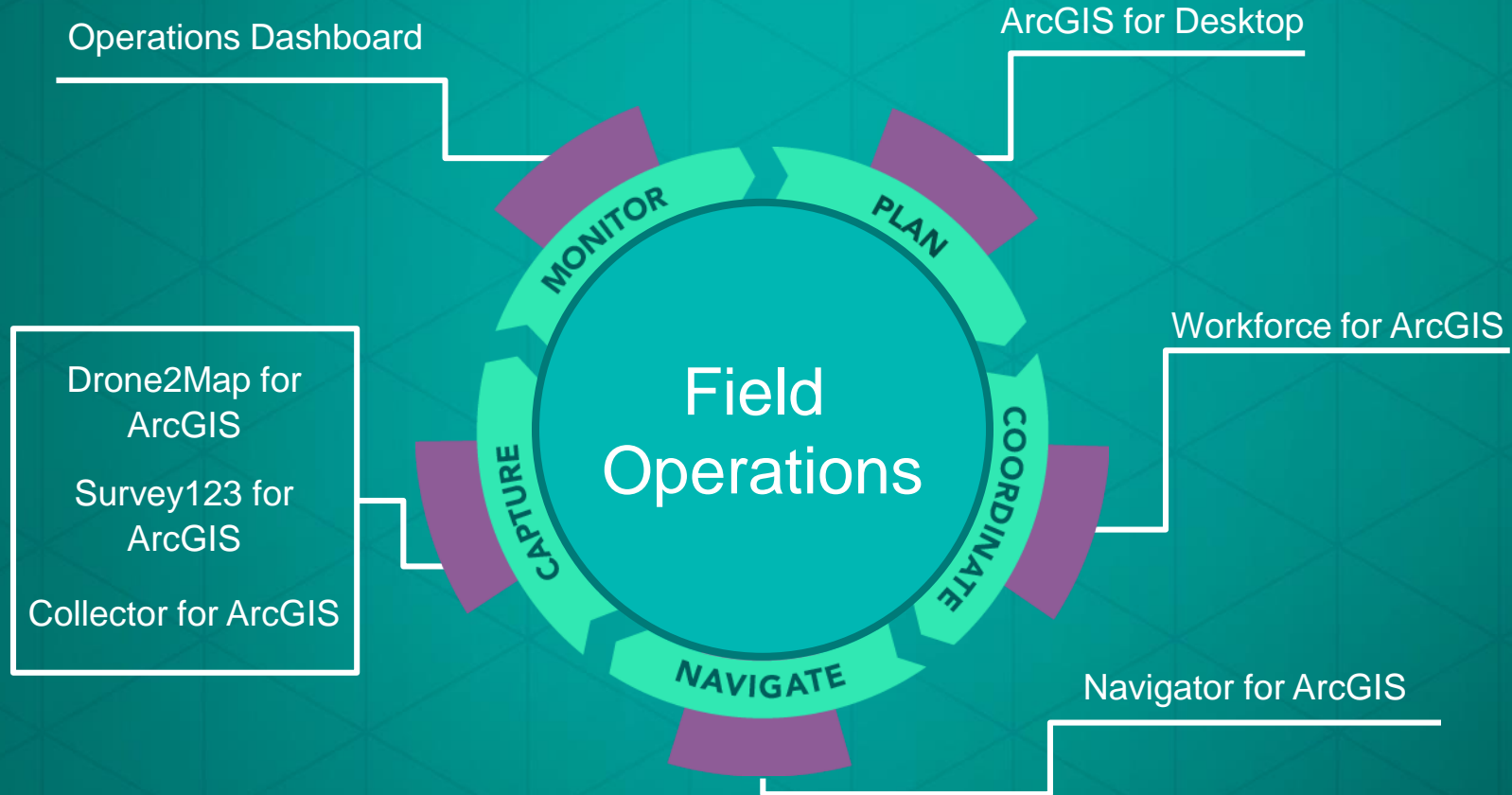
Source Code Available

# Drone2Map for ArcGIS

Drone2Map for  
ArcGIS



**2D Imagery, Point Clouds,  
3D Meshes  
Now in Beta**

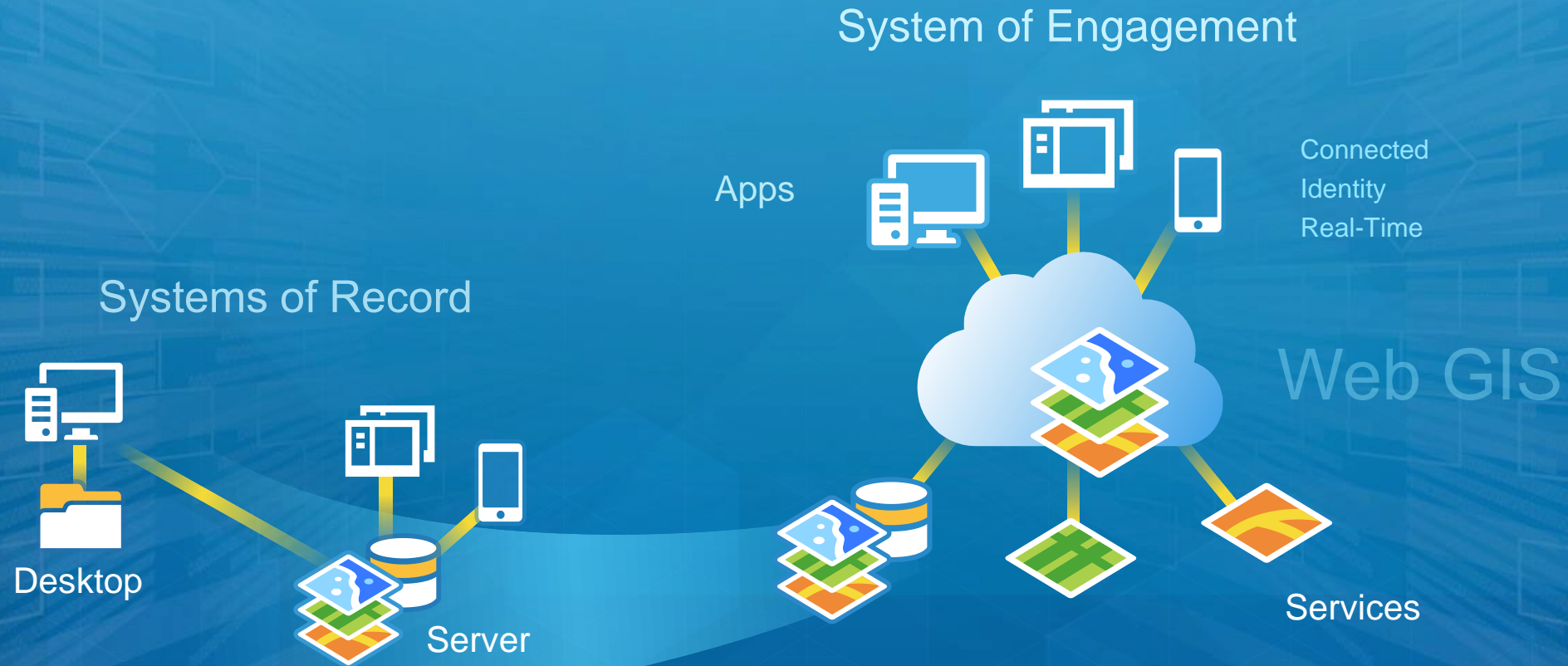


# Field Operations, Understand and Communicate





# Organizations are Fully Leveraging Their Information Assets



Opening up, Integrating and Simplifying Everything

